

Kviteseid Lutheran Church

P.O. Box 31 • 3rd and Summit

Milan, Minnesota 56262

Phone (320) 734-4455

Congregation President: Connie Fragodt

conniefragodt@hotmail.com

Congregation ID: 3F 12150



*The Vision of Kviteseid Lutheran Church is to
grow and send disciples of the Lord Jesus Christ,
to serve in families, communities and the world,
witnessing to the love of God and the
empowerment of God's Spirit.*

Our Congregational Life

Our people and activities:

Kviteseid congregation, founded in 1872, has its roots in Kviteseid, Norway and many of the parishioners are descendants of the original Kviteseid founders. Currently, there are about 320 baptized members. The average worship attendance is about 60 people with an online attendance of up to 100.

Worship services are held every Sunday at 10:30 am or 9:00am. Kviteseid alternates services times with their partnering congregation Big Bend Lutheran. *The Lutheran Book of Worship* and *With One Voice* are commonly used in conjunction with an overhead projection system. Communion is offered twice a month to all who believe in Christ. The pastor or laypersons bring the sacrament to members who cannot attend services. Young people in the fifth grade are prepared for receiving the sacrament by a team, including the pastor, Sunday School teacher and parents.



Sunday School is offered to ages 3 -12 grade. A Spark Rotation curriculum is currently being used. This curriculum has four hands on mini workshops. Students participate in art, theatre, cooking and bible skills. This type of curriculum increases the excitement of attending Sunday school. Music is also incorporated into the mini sessions.

Confirmation classes are taught by the pastor to eighth and ninth grade students on Wednesday afternoons after school. Prior to being presented for confirmation, each confirmand meets with a member of the Board of Deacons for questioning. Confirmation is often held on the last Sunday in April.

Kviteseid offers adult bible opportunities. Bible study has been led by the pastor or lay people.

The Luther League includes youth grades 7-12. The group focuses on volunteering within the church and community. Throughout the church year, they serve Lenten suppers, are responsible for ushering duties and participate in youth group activities in the church.

The Helping Hands has a governing board of 9 members. They organize women's Bible Study



groups, which meet monthly using a Bible study of their choice. The group also has a very active quilting ministry, making quilts for each Kviteseid Senior, newly baptized babies, people in crisis, an area girl's ranch, women's shelters, Lutheran World Relief and other worthy causes. This group also assembles health kits, school kits and layettes.

Military boxes are gathered, assembled and mailed by a group in our midst. They are much appreciated by soldiers at holiday time as well as other times of the year.

There are five Service Groups, which are organized by the Helping Hands board. These groups do several things for the congregation including providing, preparing and serving luncheons following funerals, assisting with fellowship dinners, bloodmobile drives, decorating the church for various Holidays and other projects within the church and community.

Kviteseid partnered with Thrivent Builds/Habitat for Humanity and built a home in Milan in 2006. A recently widowed woman received the home and is a tremendous addition to our congregation.

The Prayer Shawl Ministry is a very meaningful addition to our congregational life to date, about 50 shawls have been made and more than 30 have been distributed to those who are need of the special comfort of prayer. We also have an active prayer chain ministry.



Kviteseid has established an Endowment Trust Fund where the principal is invested and the income generated is distributed to enhance the mission and ministry of Kviteseid. Kviteseid also has a Micah Fund that gives emergency cash to people in need.

Music has played an important role in the development of the congregation. A computerized organ has allowed for a variety of music genre to be offered. Church choirs consist of the Sunday school students which sing one time a month during the church service. A Holiday Senior Choir sings at Easter and other special occasions. Our congregation enjoys the children singing at the worship services.



The congregation has joined the Adopt-A-Highway program and twice each year cleans the ditches along a two-mile stretch near Milan.

We have supported a number of other concerns, including Water's Edge Ministry, area food shelves, Lutheran World Hunger, Lutheran Campus Ministries, Lutheran World Relief, South African missionaries and South African youth.

Kviteseid has been blessed with five outstanding pastors over the past 50 years.

Pastor Percy Larson called this congregation home from 1968 to 1977, followed by Pastor Ron Burke from 1978 to 1990, Pastor Wayne Anderson from 1991 to 2003, Pastor Tom Opoien from 2004 to 2009, Pastor Cathy Rhodes from 2010 to 2012 and Pastor Kristen Isder from 2015-2025.

Our facilities and Staff:

The staff at Kviteseid Lutheran Church includes a full-time pastor, a parish assistant, an organist and a custodian.

The present church was built between 1955 and 1957 following a devastating fire that burned the church to the ground in 1955. Numerous renovations have occurred since that time. In 1993 a new roof was added; the windows were replaced in 1995 and 1996; handicap accessibility was achieved with the addition of an elevator and handicapped restroom in 1998. The main church is on two floors with most of the Sunday school rooms located in the education wing.



A new geo-thermal heating and cooling system was installed in 2002. The kitchen was totally remodeled in 2015. In the past few years, the church has realized new flooring and updates to the pastor's study.

Other beautification projects include: landscaping and a new retaining wall. The insured value of the church is \$1,561,000.

A parsonage was constructed in 1968. The insured value of the home is \$162,000. The lovely home is located ½ block from the church and has 4 bedrooms, 2 ½ baths, formal dining room, family room, partially finished basement and an attached 2 stall garage. The parsonage will be determined upon the incoming pastoral needs.



Our Community

Who we are:

The City of Milan is in western Chippewa County, approximately 150 miles west of Minneapolis at the intersection of Minnesota Highways 40 and 7/59. There is a population of approximately 500 people. Many of the residents are of northern European ancestry with recent additions of families from Micronesia.



The churches in Milan have always been one of the strongest and most important guiding forces for the people from the moment they come to this community. The Lutheran and Methodist congregations lasted throughout most of the history of Milan; however, only Kviteseid Lutheran remains. It is hard to separate the church from the community, as it is the biggest social entity there.



Milan is the home of a significant Micronesian population. This group came to Milan via a local son who served in the Peace Corp in the Micronesian Islands. They treated him well and he invited a family to come to Milan and now there are many families. Most of the adults are employed in neighboring communities. German missionaries brought Christianity to the islands shortly after WWII; about ½ of the Milan

Micronesians are Protestant and ½ are Catholic. Micronesian children attend our local student district: Lac Qui Parle Valley. The school system offers several opportunities for ESL classes for children and adults. Extra-curricular activities for the students include the Arts, Athletics and Music. LQPV started a diversity club in which all the students can participate. Inclusion is a priority for our community.

Milan is a small, very caring community in a rural setting, considered to be a great place to raise a family. When experiencing challenging times, the community always comes through when a need arises, whether it is a church, individual or family in crisis.

What We Do:

The people in the Milan area are hard working. Many households are two income families. The main source of income for the area is agriculture. Our farmers grow small grain, corn, beans and sugar beets.

Milan has always been steeped in farming and there is currently an influx of next generation farmers. Other areas of employment include government occupations, the school district, health services, and local manufacturing. Most of the businesses are locally owned and operated.



The education of the residents in Milan includes those of grade school education to high school graduates, college educated and professional level people.



The schools are of utmost importance to the community. The first school was organized in 1884, and through the years, country schools consolidated and Milan school grew. But in recent years as the population of the community declined, school enrollment also declined. In 1990, Milan's district joined with area school's Madison,

Appleton and Marietta/Nassau to form Lac Qui Parle Valley School District. A new school was built nine miles west of town. The district continues to operate elementary programs in Appleton and Madison. The Milan area students are bused to either Madison Elementary or Appleton Elementary. Students in grades 5-12 are bused to Lac Qui Parle Valley Middle/ High School. LQPV schools went through a renovation in 2020. A new elementary school was built in Appleton with an attached daycare.

MMN Elementary in Madison was totally updated and a daycare was added. The MS/HS added another gymnasium, updated the heating/cooling system, upgraded the theater and the athletic complex.

The cozy main street of Milan has a grocery store, café, bank, machine and diesel repair shop, gas station, blacksmith shop, gift shop, a museum, library, which is part of the Pioneer Network. Chippewa County Medical Health offers services two days a week as a satellite clinic. Milan has its own volunteer fire department and first responders. There is an active American Legion Post, Milan Lion's Club and Commercial Club. The community is also blessed with buried fiber optic communications and high-speed Internet. The high-speed internet was expanded in 2025 to all rural areas.

What Makes Us Unique:

Milan is very unique in many ways. We are located in the heart of the Lac Qui Parle Game Refuge and so are very close to Lac Qui Parle Lake and State Park, which boast unspoiled public lands, campgrounds, walleye, northern pike, crappie and pan fishing. The many acres



of public and private wildlife production land enhance the populations of pheasants, ducks, geese, partridge, turkey and deer. One can also keep busy with biking along the 3 ½ mile paved bike trail, snowmobiling on groomed trails, four-wheeling, bird watching and other outdoor activities. Other area attractions included: an Aquatic Center, OHV Park and several golf courses.

Milan has a museum. The Arv Hus Museum houses a unique collection of vintage photos and other pioneer items from the culturally rich Milan area.

Glacial Plains Cooperative: This facility houses a high-speed storage and receiving elevator for corn and soybeans. Local and farmers from outside the area use this facility extensively.



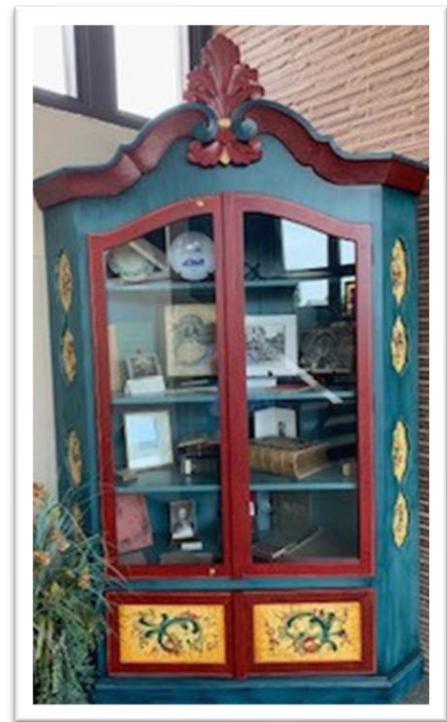
In 2007 the Milan school closed and the school building became available. The building was kept in the hands of the Milan community through the organization of the non-profit community corporation, the Greater Milan Initiative (GMI). Currently, the building features a state licensed community kitchen, a community fitness center, a thrift shop, artist studios and business offices. A gym is available to youth and adults for a variety of recreational activities as well as community events, and classrooms are used for community education classes including Adult Basic Education/GED/ESL classes.





Milan is fortunate to have many excellent artists living in our area. The Milan Village Art School was founded in 1988 for just that reason. Hundreds of hours of work from volunteers have transformed the historic schoolhouse into a vibrant venue for the arts in West Central Minnesota. The art school is a non-profit, member supported organization dedicated to promoting the arts. More than 30 artists from all over come to teach more than 50 classes each year to students who travel many miles to learn.

Milan is very well known, nationally and internationally, as the home of two rosemaling Gold Medalists. Rosemaling is a Norwegian art form of flowers and scrolls painted on a number of things including plates, trunks, bowls, etc. The baptismal bowl at Kviteseid is painted by one of the artists. She has also painted murals in several of the restrooms at Kviteseid depicting nisse doing their various household chores. The heritage piece was painted by the other artist.



As part of the Scandinavian heritage of many of the folks living in Milan, Syttende Mai (17th of May) is celebrated each year. The people of Kviteseid

host a tea featuring a wide variety of ethnic foods – just like Mom used to make!

Milan also has the Milan Community Band, which is made up of 25 area musicians. This group has been together for more than 35 years and plays in many area parades and community events each year.

Our Future

Our Mission and Ministry:

The vision of Kviteseid Lutheran Church is to grow and send disciples of the Lord Jesus Christ, to serve in families, communities and the world, witnessing to the love of God and the empowerment of Christ's Spirit.



Kviteseid has a rich heritage of believers who have heeded the call to “go and make disciples of all nations.” In the past, we have had members serving at many levels of the larger church body. We send representatives to the synod conventions and participate, as we are able.

As with any organization, our future is our young people, and a very real challenge is to make Kviteseid relevant for the young families.

The local Micronesian population hold services at the Kviteseid facility Sunday afternoons with their own pastoral leadership. In addition, the congregation must continue its outreach to the unchurched and new community members and bring them into the Kviteseid fold of believers.

The congregation's stewardship obligations for 2025 are line items on the annual budget and consist of \$4,800 for benevolence, \$2,000 for missionary sponsor and \$720 local missions. These figures are recommended by the trustees and adopted by the congregation.

Our New Partner

Kviteseid is excited about enhancing its passion for spiritual growth and renewed commitment through the ministry of a new pastor and the opportunity for reflection and self-evaluation this transition gives the congregation.

Expectations of the new Kviteseid Pastor:

*Lead an effective worship service and preach a meaningful, applicable sermon to motivate and challenge us to apply the gospel of Jesus Christ in today's world.

*Guide the congregation in a Bible based ministry.

*Witness to the Christian faith in the community and inspire us to do the same.

*Relate to the youth in our church and stimulate them in the development in the Christian faith and encourage their lifelong participation in church activities.

*Work all ages in the congregation building on their assets encouraging intergenerational ministry and dialogue.

*Inspire the congregation to become a welcoming presence and reach out to all members of the community inviting all into the fellowship of Kviteseid.

*Support and nurture people in need by visiting them in their homes, hospitals, nursing homes and settings other than church functions.

*Motivate the members of the congregation toward volunteerism and renewed commitment.

*Challenge us to grow in faith and to reach out to others, both in community and the world.

*Empathize with members of the congregation as they face a variety of life challenges.

*Be accessible to all members of the church.

*Work with the boards in the operational functions of church regarding finances, personnel and facilities.



Profile of
Kviteseid Lutheran Church